

WCEOLP ORANGE- PALLIATIVE CARE UNIT (PCU)

Review of Environmental Factors (REF) Report / May 2024





“

CONTEXT acknowledges the Traditional Custodians of the land, and recognises Elders past and present. Through authentic engagement with Aboriginal people and the landscapes within which we work, we strive to deepen our understanding of Country and our relationship with its People.

WCEOLP Orange - Palliative Care Unit (PCU)

by

CONTEXT Landscape Architecture

in collaboration with BVN for

Health Infrastructure NSW

Context and our design team collaborators acknowledge the Traditional Custodians of the land, and recognise Elders past and present.

Through authentic engagement with Aboriginal people and the landscapes within which we work, we strive to deepen our understanding of Country and our relationship with its People.

Document Control

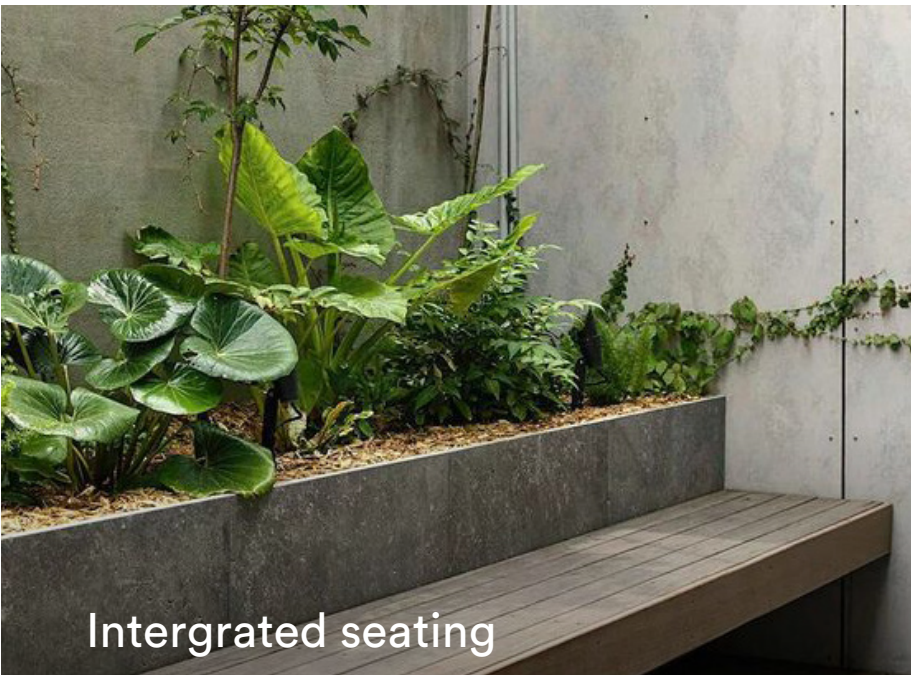
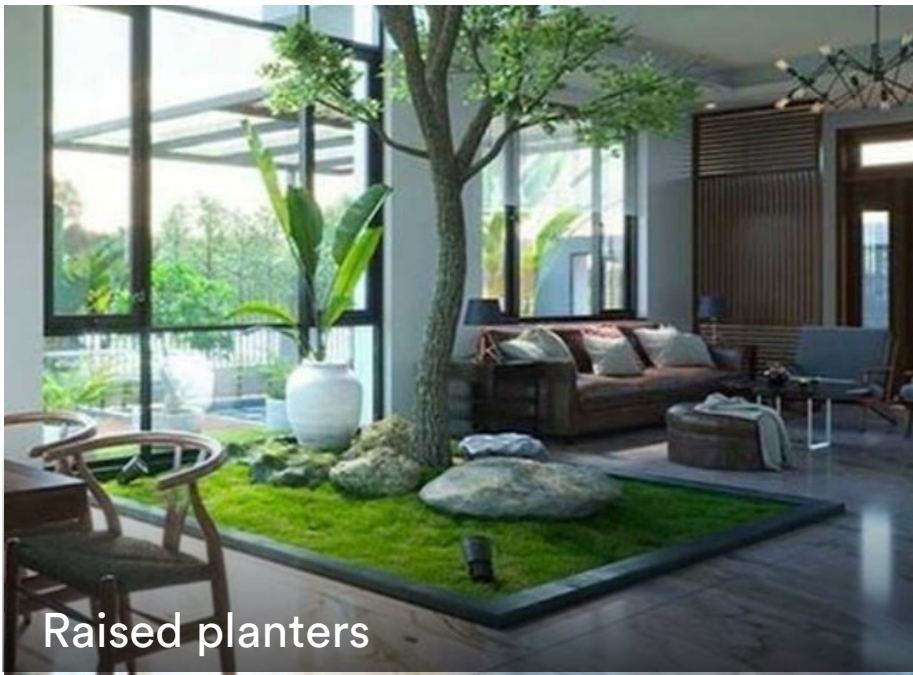
Revision	Date	Description	By	Approved
A	06.05.2024	SD	JM	SJ
B	08.05.2024	REF	JM	SJ

Contents

Landscape Precedents - Garden Room	04
Landscape Design Statement	05
Landscape Plan	06
Landscape Section	07
Landscape View	08
Preliminary Planting Schedule	09

LANDSCAPE PRECEDENTS - GARDEN ROOM

- A paved room with natural light from generous perforations to the north facing wall
- Planting in raised planter beds and pots to create a mix of spaces.
- Different fixed and loose furniture options for socialising.
- Quieter areas for privacy.



LANDSCAPE DESIGN STATEMENT

Design Statement

The landscape approach to the palliative care unit upgrade at Orange Hospital was developed with the main purpose of bringing the sense of lush green landscape into the building.

The spatial arrangement facilitates a variety of landscape settings so that the space can be shared by various small groups, in intimate settings.

The planted green wall provides a backdrop for all users and an enveloped sense of green.

The landscape is embedded with the principles of biophilia, allowing views and proximity to green to be maximised.

The communal living spaces and kitchen look out onto the garden outside, while natural light penetrates the internal spaces from outside.

Plants have been chosen for their ease of maintenance and vigor, ensuring the space will always feel full, lush, and green.

Comfort for users has been considered, with a collection of small landscape spaces that serve the different needs of the users. These spaces include private contemplation spaces for families to gather.

Better Places

Better Places is about enhancing the design quality of our built environment, raising expectations, and raising standards, about working better and creating better environments.

The internal space has been designed for equitable and inclusive access allowing for patient’s beds to be moved through all areas and interact with the space.

Enjoyable, safe, and comfortable:

A small built-in seating bench is proposed and allows users to sit while they visit and enjoy the garden.

Functional, responsive, and fit for purpose: The space has been programmed in a manner that allows patients who are able-bodied, assisted walking or in a bed to be able to access the different landscape spaces.

Design Guide for Health

The landscape design has been developed on the fundamental design principles of the NSW health design guidelines, the landscape has been designed with dignity with the landscape being welcoming, creating an environment for people to feel safe, cared for and supported during stressful times. The programming has focused on designing for wellbeing with all patients, visitors and staff having access to greenery and gardens of different scales with both visual and physical connections.

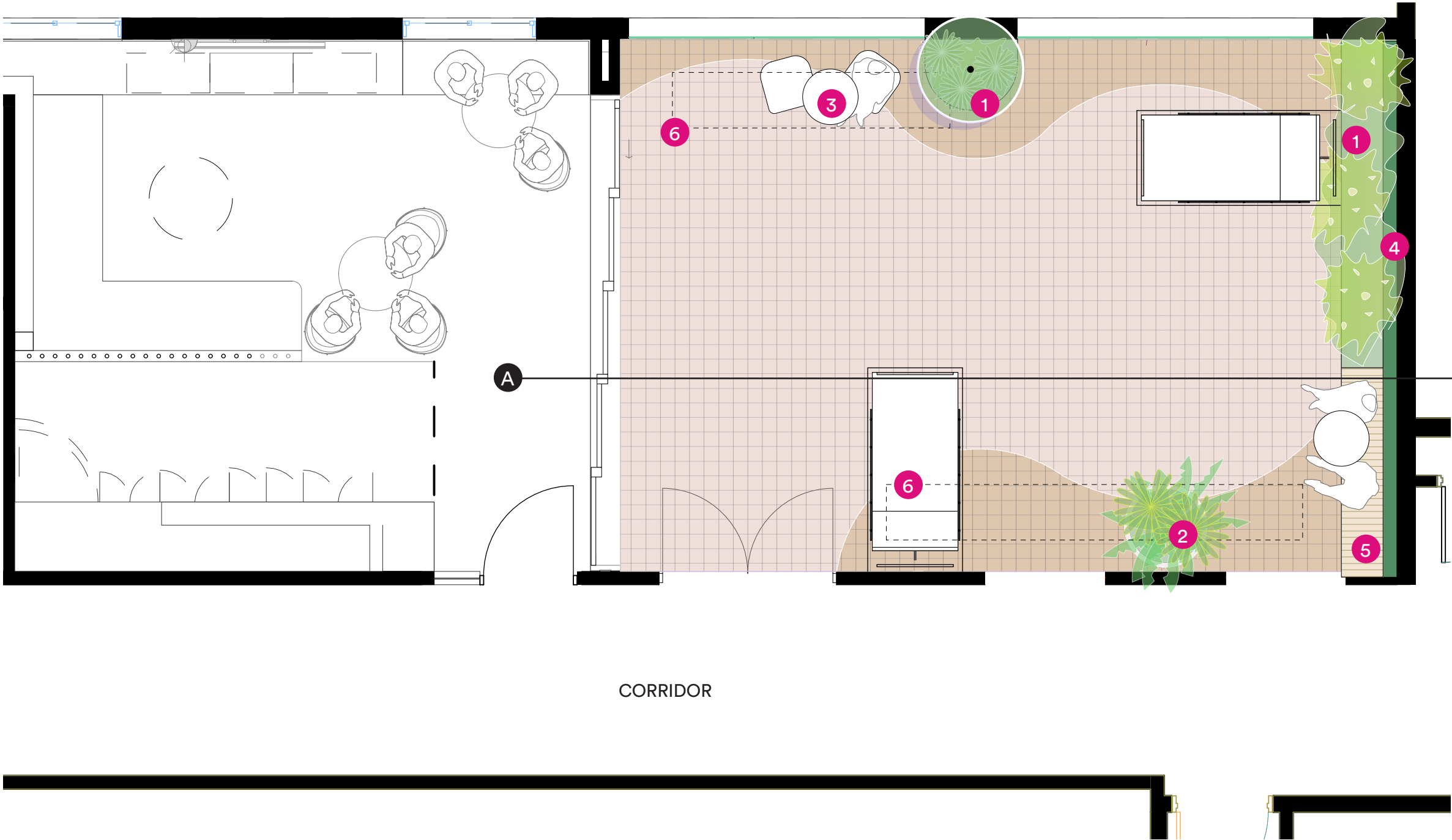
CPTED principles

The landscape design has adopted best practice CPTED principles with the planting design and species being curated to allow for vertical and horizontal sight lines to the programmed.

The hospital staff will be able to visually monitor patients in the outdoor spaces.

LANDSCAPE PLAN

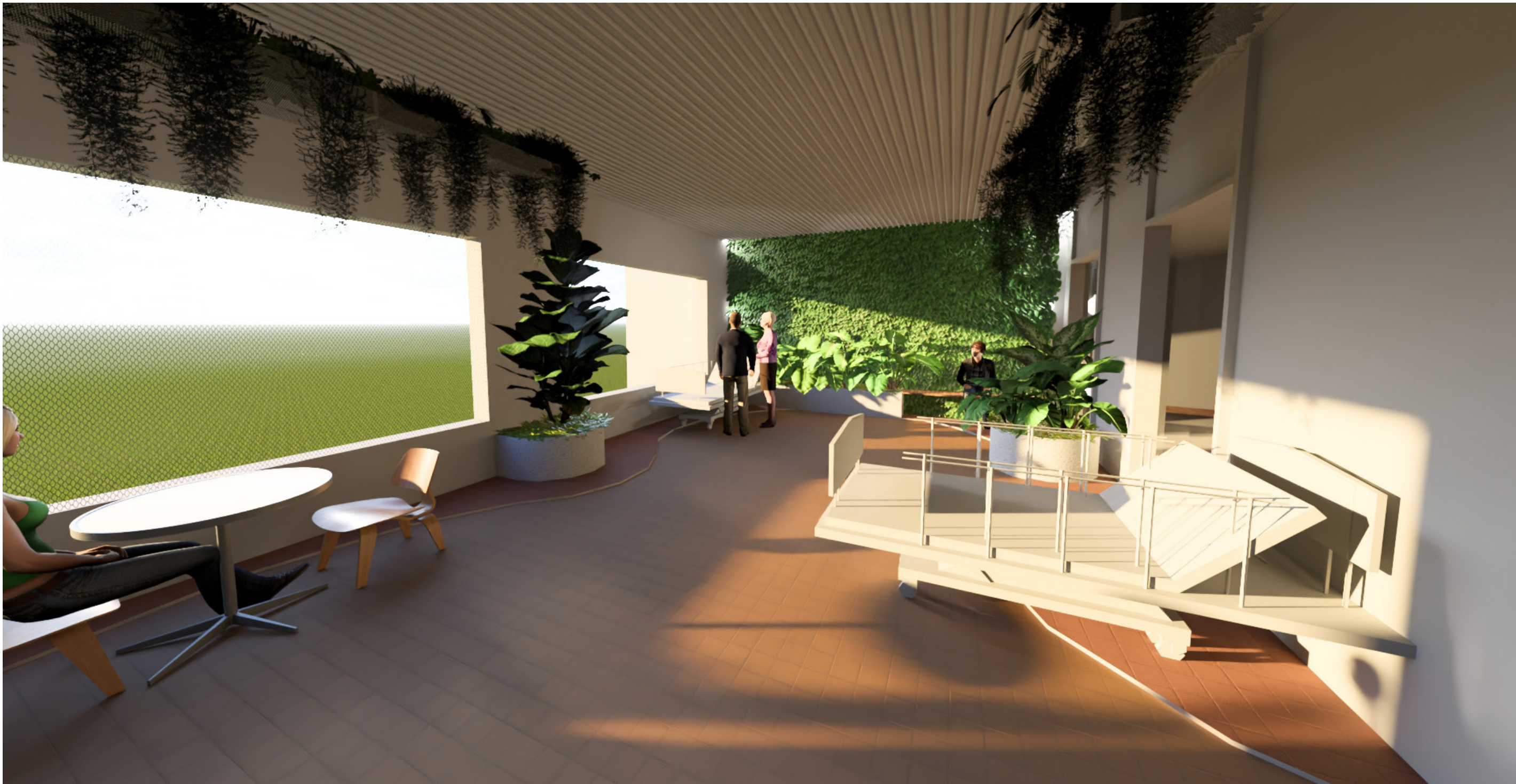
- 1 Raised planter
- 2 Various Sized Pots
- 3 Table with seating
- 4 Green wall
- 5 Intergrated seating
- 6 Suspended Planter



LANDSCAPE SECTION



LANDSCAPE VIEW



Preliminary Planting Palette

Botanic Name	Common Name	Mature Size	Pot Size
SHRUBS, HEDGES & SCREENING			
<i>Ficus lyrata</i>	Fiddle Leaf Fig	1.5m	300mm
GROUNDCOVERS			
<i>Alpinia mutica</i>	False Cardamon Ginger	1.5m	200mm
<i>Blechnum cartilagineum</i>	Gristle Fern	1m	200mm
<i>Doodia aspera</i>	Prickly Rasp Fern	0.3m	140mm
<i>Ligularia reniformis</i>	Tractor Seat Plant	0.8m	200mm
<i>Philodendron</i> 'Black Cardinal'	Black Cardinal	0.5m	200mm
SUSPENDED PLANTER			
<i>Epipremnum aureum</i>	Devils Ivy	1m	200mm
<i>Monstera deliciosa</i>	Fruit Salad Plant	2m	200mm
<i>Philodendron</i> 'Xanadu'	Xanadu	1.5m	200mm

